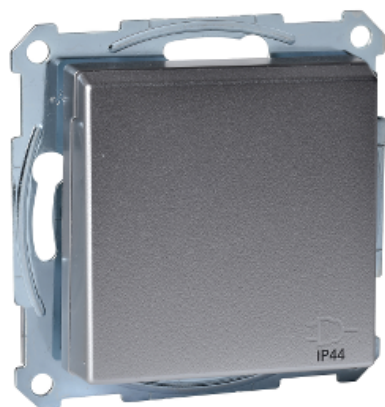


# Product data sheet

## Characteristics

# MTN2314-0460

SCHUKO socket-outlet w. hng.lid, IP44, shut.,  
screwl. term., aluminium, System M



### Main

Aesthetic name	M-Smart M-Star M-Plan glass System M M-Arc M-Elegance M-Plan
Product or component type	Socket-outlet
Device presentation	Mechanism with central plate
Outlet standard	German
Socket additional information	With hinged lid

### Complementary

Outlet poles configuration	2P + E
Wiring device mounting	Flush
Fixing mode	By screws and claws
Rated current	16 A
[Ue] rated operational voltage	250 V
Colour tint	Aluminium
Connections - terminals	Screwless terminals
Material	Polycarbonate matt
Surface treatment	Varnished

### Environment

IP degree of protection	IP44
-------------------------	------

### Packing Units

Unit Type of Package 1	PCE
Number of Units in Package 1	1
Package 1 Weight	102 g
Package 1 Height	5.3 cm

Package 1 width	7.6 cm
Package 1 Length	7.6 cm
Unit Type of Package 2	CAR
Number of Units in Package 2	50
Package 2 Weight	5.51 kg
Package 2 Height	18.5 cm
Package 2 width	30 cm
Package 2 Length	40 cm

### Offer Sustainability

EU RoHS Directive	Under investigation
WEEE	The product must be disposed on European Union markets following specific waste collection and never end up in rubbish bins

### Contractual warranty

Warranty	18 months
----------	-----------