

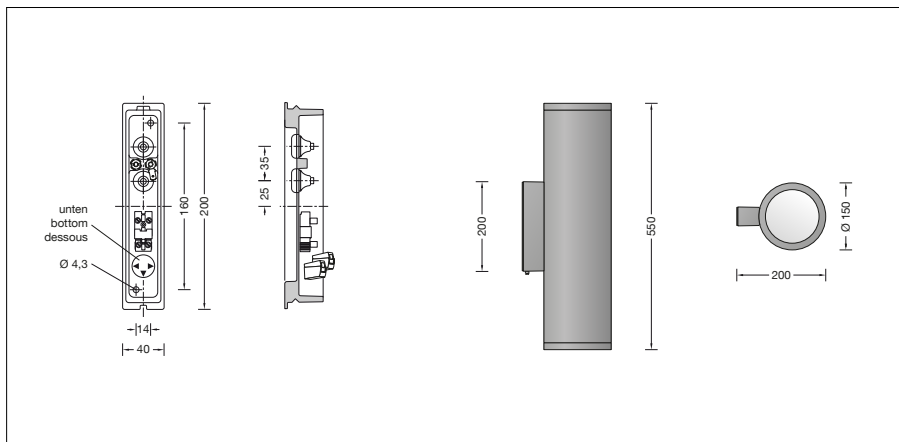
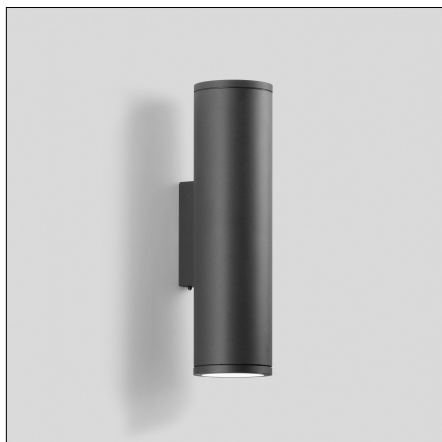
BEGA**24 009**

Wall luminaire



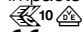
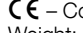
Project · Reference number

Date



Product data sheet

Product description

Luminaire made of aluminium alloy, aluminium and stainless steel
 BEGA Unidure® coating technology
 Clear safety glass
 Silicone gasket
 Reflector made of pure anodised aluminium
 Mounting plate with 2 fixing holes \varnothing 4.3 mm · 160 x 14 mm spacing
 2 cable entries for through-wiring of mains supply cable \varnothing 7-10.5 mm, max. 5 G 1.5[□]
 Connecting terminal 2.5[□] with plug connection
 Earth conductor connection
 BEGA Ultimate Driver®
 LED power supply unit
 220-240 V \sim 0/50-60 Hz
 DC 176-264 V
 DALI-controllable
 Number of DALI addresses: 1
 Basic insulation is provided between the mains and control cables
 BEGA Thermal Control®
 Temporary thermal regulation to protect temperature-sensitive components without switching off the luminaire
 Safety class I
 Protection class IP 65
 Dust-tight and protection against water jets
 Impact strength IK10
 Protection against mechanical impacts < 20 joule
 – Safety mark
 – Conformity mark
 Weight: 5.2 kg
 This product contains light sources of energy efficiency class(es) D, E

Application

Wall luminaire with two-sided light output.
 For illumination and design tasks in architecture.
 The light directed downwards is intended to illuminate the wall and the horizontal surface in front of it.
 The light directed upwards is intended to illuminate the wall and ceiling surfaces.

Lamp

Module connected wattage	36.2 W
Luminaire connected wattage	40 W
Rated temperature	$t_a = 25^\circ\text{C}$
Ambient temperature	$t_{a, \max} = 25^\circ\text{C}$

24 009 K3

Module designation	2x LED-0814/830
Colour temperature	3000 K
Colour rendering index	CRI > 80
Module luminous flux	5220 lm
Luminaire luminous flux	3300 lm
Luminaire luminous efficiency	82,5 lm/W

24 009 K4

Module designation	2x LED-0814/840
Colour temperature	4000 K
Colour rendering index	CRI > 80
Module luminous flux	5580 lm
Luminaire luminous flux	3528 lm
Luminaire luminous efficiency	88,2 lm/W

Lighting technology

Half beam angle 14°
 Luminaire data for the DIALux lighting design program for outdoor lighting, street lighting and indoor lighting, as well as luminaire data in EULUMDAT and IES format are available on our website at www.bega.com.

Inrush current

Inrush current: 5 A / 100 μs
 Maximum number of luminaires of this type per miniature circuit breaker:
 B 10A: 28 luminaires
 B 16A: 45 luminaires
 C 10A: 28 luminaires
 C 16A: 48 luminaires

Ratio of luminous flux

Luminous flux upper half-space	50 %
Luminous flux lower half-space	50 %

BUG rating according to IES TM-15-07:
 2-4-0

CEN Flux Code according to EN 13032-2:
 99-100-100-50-100-99-100-100-50

Service life · Ambient temperature

Rated temperature $t_a = 25^\circ\text{C}$
 LED psu: > 50,000 h
 LED module: 170,000 h (L 80 B 50)

Ambient temperature max. $t_a = 25^\circ\text{C}$ (100 %)
 LED psu: 50,000 h
 LED module: 170,000 h (L 80 B 50)

Ambient temperature max. $t_a = 50^\circ\text{C}$ (68 %)
 LED psu: > 50,000 h
 LED module: > 50,000 h (L 70 B 50)

BEGA Thermal Control® protects temperature-sensitive luminaire components by temporarily limiting the nominal power at high temperatures.

Article No. 24 009

LED colour temperature optionally 3000 K or 4000 K
 3000 K – Article number + **K3**
 4000 K – Article number + **K4**

Colour optionally graphite, white or silver
 Graphite – Article number
 White – Article number + **W**
 Silver – Article number + **A**

Light distribution