

# Rittal – The System.

Faster – better – everywhere.

► **Base/plinth corner piece with base/plinth trim panels, front and rear, 200 mm for VX, VX IT, VX SE, TE, TS, TS IT, SE, CM, TP, PC, IW – VX 8640.021**

Date : Aug 18, 2021

ENCLOSURES

POWER DISTRIBUTION

CLIMATE CONTROL

IT INFRASTRUCTURE

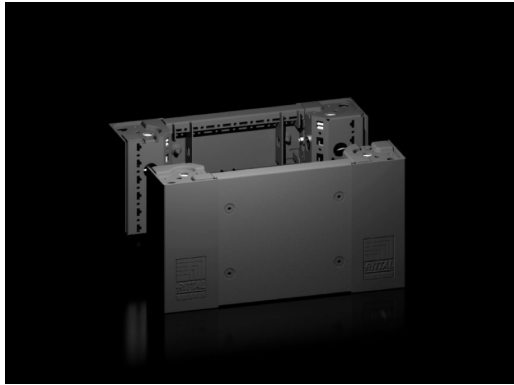
SOFTWARE & SERVICES

FRIEDHELM LOH GROUP



# Base/plinth corner piece with base/plinth trim panels, front and rear, 200 mm for VX, VX IT, VX SE, TE, TS, TS IT, SE, CM, TP, PC, IW – VX 8640.021

created: 18.08.2021 on [www.rittal.com/com-en](http://www.rittal.com/com-en)



## Product description

<b>Description:</b>	Heavy-duty base/plinth corner pieces with moulded self-positioning to the enclosure, may be used with or without trim panels depending on the application. Large openings in the base/plinth corner piece for optimum access to the screw-fastening point, may be concealed with a plastic corner and baying cover.
<b>Material:</b>	Base/plinth corner piece: Sheet steel Base/plinth trims: Sheet steel Corner and baying cover: Plastic
<b>Colour:</b>	RAL 9005
<b>Supply includes:</b>	4 base/plinth corner pieces, 200 mm high 4 corner covers 1 baying cover 1 base/plinth trim panel, front/rear, 200 mm high 2 base/plinth trim panels, front/rear, 100 mm high Assembly parts
<b>Note:</b>	Base/plinth trim panels, sides to finish off a unit, for additional stabilisation between base/plinths, or for interior configuration

## Product description

<b>To fit:</b>	Width: = 400 mm
<b>Dimensions:</b>	Height: 200 mm
<b>Packs of:</b>	2 pc(s).

<b>Weight/pack:</b>	6.42 kg
<b>Copper weight (kg per piece):</b>	0
<b>EAN:</b>	4028177958852
<b>Customs tariff number:</b>	94039010
<b>ETIM 7.0:</b>	EC000721
<b>ETIM 6.0:</b>	EC000721
<b>eCl@ss 8.0/8.1:</b>	27182003
<b>eCl@ss 6.0/6.1:</b>	27182003
<b>Product description:</b>	VX Base/plinth corner piece, with base/plinth trim panel, front and rear, H: 200 mm, for W: 400 mm, sheet steel
<b>Approvals</b>	
<b>Approvals:</b>	UL + C-UL
<b>Certificates:</b>	NA