

Rittal – The System.

Faster – better – everywhere.

► **Base/plinth corner piece with base/plinth trim panels, front and rear, 200 mm for VX, VX IT, VX SE, TE, TS, TS IT, SE, CM, TP, PC, IW – VX 8640.022**

Date : Aug 18, 2021

ENCLOSURES

POWER DISTRIBUTION

CLIMATE CONTROL

IT INFRASTRUCTURE

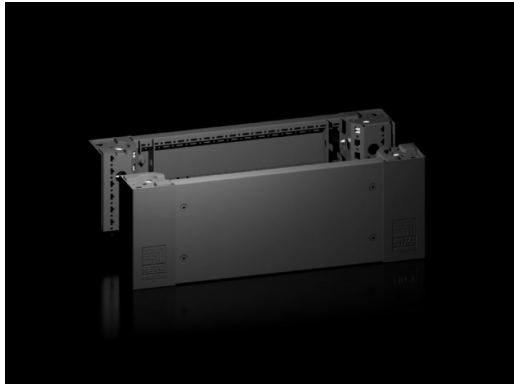
SOFTWARE & SERVICES

FRIEDHELM LOH GROUP



Base/plinth corner piece with base/plinth trim panels, front and rear, 200 mm for VX, VX IT, VX SE, TE, TS, TS IT, SE, CM, TP, PC, IW – VX 8640.022

created: 18.08.2021 on www.rittal.com/com-en



Product description

| | |
|------------------|---|
| Description: | Heavy-duty base/plinth corner pieces with moulded self-positioning to the enclosure, may be used with or without trim panels depending on the application. Large openings in the base/plinth corner piece for optimum access to the screw-fastening point, may be concealed with a plastic corner and baying cover. |
| Material: | Base/plinth corner piece: Sheet steel Base/plinth trims: Sheet steel Corner and baying cover: Plastic |
| Colour: | RAL 9005 |
| Supply includes: | 4 base/plinth corner pieces, 200 mm high 4 corner covers 1 baying cover 1 base/plinth trim panel, front/rear, 200 mm high 2 base/plinth trim panels, front/rear, 100 mm high Assembly parts |
| Note: | Base/plinth trim panels, sides to finish off a unit, for additional stabilisation between base/plinths, or for interior configuration |

Product description

| | |
|-------------|-----------------|
| To fit: | Width: = 600 mm |
| Dimensions: | Height: 200 mm |
| Packs of: | 2 pc(s). |

| | |
|--------------------------------------|---|
| Weight/pack: | 7.84 kg |
| Copper weight (kg per piece): | 0 |
| EAN: | 4028177958869 |
| Customs tariff number: | 94039010 |
| ETIM 7.0: | EC000721 |
| ETIM 6.0: | EC000721 |
| eCl@ss 8.0/8.1: | 27182003 |
| eCl@ss 6.0/6.1: | 27182003 |
| Product description: | VX Base/plinth corner piece, with base/plinth trim panel, front and rear, H: 200 mm, for W: 600 mm, sheet steel |
| Approvals | |
| Approvals: | UL + C-UL |
| Certificates: | NA |