

Rittal – The System.

Faster – better – everywhere.

► **Base/plinth corner piece with base/plinth trim panels, front and rear, 200 mm for VX, VX IT, VX SE, TE, TS, TS IT, SE, CM, TP, PC, IW – VX 8640.023**

Date : Aug 18, 2021

ENCLOSURES

POWER DISTRIBUTION

CLIMATE CONTROL

IT INFRASTRUCTURE

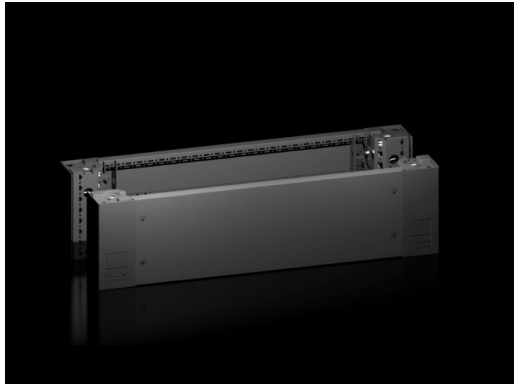
SOFTWARE & SERVICES

FRIEDHELM LOH GROUP



Base/plinth corner piece with base/plinth trim panels, front and rear, 200 mm for VX, VX IT, VX SE, TE, TS, TS IT, SE, CM, TP, PC, IW – VX 8640.023

created: 18.08.2021 on www.rittal.com/com-en



Product description

Description:	Heavy-duty base/plinth corner pieces with moulded self-positioning to the enclosure, may be used with or without trim panels depending on the application. Large openings in the base/plinth corner piece for optimum access to the screw-fastening point, may be concealed with a plastic corner and baying cover.
Material:	Base/plinth corner piece: Sheet steel Base/plinth trims: Sheet steel Corner and baying cover: Plastic
Colour:	RAL 9005
Supply includes:	4 base/plinth corner pieces, 200 mm high 4 corner covers 1 baying cover 1 base/plinth trim panel, front/rear, 200 mm high 2 base/plinth trim panels, front/rear, 100 mm high Assembly parts
Note:	Base/plinth trim panels, sides to finish off a unit, for additional stabilisation between base/plinths, or for interior configuration

Product description

To fit:	Width: = 800 mm
Dimensions:	Height: 200 mm
Packs of:	2 pc(s).

Weight/pack:	9.24 kg
Copper weight (kg per piece):	0
EAN:	4028177958876
Customs tariff number:	94039010
ETIM 7.0:	EC000721
ETIM 6.0:	EC000721
eCl@ss 8.0/8.1:	27182003
eCl@ss 6.0/6.1:	27182003
Product description:	VX Base/plinth corner piece, with base/plinth trim panel, front and rear, H: 200 mm, for W: 800 mm, sheet steel
Approvals	
Approvals:	UL + C-UL
Certificates:	NA