

# Rittal – The System.

Faster – better – everywhere.

## Section for cable entry, rear for VX, SE – VX 8618.811

Date : Aug 18, 2021

ENCLOSURES

POWER DISTRIBUTION

CLIMATE CONTROL

IT INFRASTRUCTURE

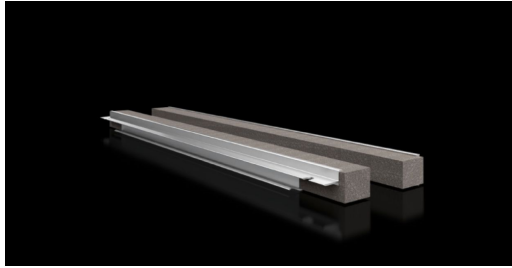
SOFTWARE & SERVICES

FRIEDHELM LOH GROUP



# Section for cable entry, rear for VX, SE – VX 8618.811

created: 18.08.2021 on [www.rittal.com/com-en](http://www.rittal.com/com-en)



## Product description

<b>Description:</b>	For top-mounting on the gland plate and enclosure frame.
<b>Benefits:</b>	Simple assembly Full-surface support High level of sealing of cables inserted into the enclosure
<b>Applications:</b>	For top-mounting on the gland plate and enclosure frame
<b>Material:</b>	Hard PVC Flame-resistant, self-extinguishing Temperature resistant to +60 °C Seal: PU foam Cross-section: 30 x 25 mm
<b>Protection category IP to IEC 60 529:</b>	IP 55 if installed correctly
<b>Supply includes:</b>	Plug-in sections, incl. foam rubber clamp strip
<b>Product modification:</b>	From February 2021, the cable entry section will have a plastic extrusion. The benefits are as follows: Simple clip-on assembly, improved handling and a superior grip on the gland plates.
<b>Note:</b>	You will need two pieces per cable entry point. From an enclosure width of 1000 mm, the base assembly is divided into two sections in the width. Two cable entry points (left/right) may be used.

## Product description

<b>To fit:</b>	Enclosure type: VX Enclosure type: VX SE Width: = 800 mm
----------------	--

<b>Packs of:</b>	2 pc(s).
<b>Weight/pack:</b>	0.31 kg
<b>Copper weight (kg per piece):</b>	0
<b>EAN:</b>	4028177922808
<b>Customs tariff number:</b>	76042990
<b>ETIM 7.0:</b>	EC002624
<b>ETIM 6.0:</b>	EC002624
<b>eCl@ss 8.0/8.1:</b>	27189265
<b>eCl@ss 6.0/6.1:</b>	27400604
<b>Product description:</b>	VX Section for cable entry, rear, for W: 800 mm