

Rittal – The System.

Faster – better – everywhere.

Base/plinth trim panels, vented for base/plinth system VX – VX 8620.090

Date : Aug 18, 2021

ENCLOSURES

POWER DISTRIBUTION

CLIMATE CONTROL

IT INFRASTRUCTURE

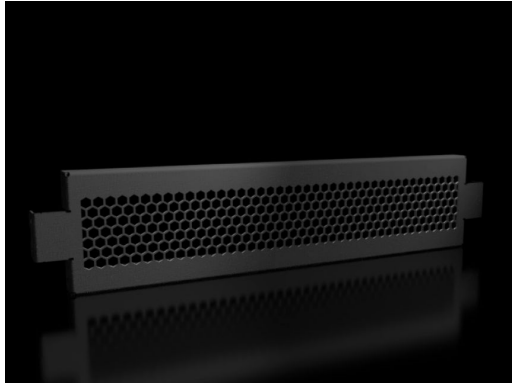
SOFTWARE & SERVICES

FRIEDHELM LOH GROUP



Base/plinth trim panels, vented for base/plinth system VX – VX 8620.090

created: 18.08.2021 on www.rittal.com/com-en



Product description

Description:	For venting the enclosure via the base/plinth. Specifically in applications such as power distribution where the enclosure gland plates are not used, this can be used to achieve a higher air throughput inside the enclosure. Various solutions to raise the roof and special roof plates with vent openings are also available for enclosure venting. With a 200 mm base/plinth height, one or two vented trim panels may optionally be used. Thanks to the complete symmetry of the base/plinth system VX, the trim panels may either be fitted at the front, rear or side on the base/plinth corner piece.
---------------------	---

Material:	Sheet steel
------------------	-------------

Colour:	RAL 9005
----------------	----------

Supply includes:	Assembly parts
-------------------------	----------------

Note:	Various solutions to raise the roof and special roof plates with vent openings are also available for enclosure venting
--------------	---

Product description

To fit:	Width/depth: 600 mm
----------------	---------------------

Dimensions:	Height: 100 mm
--------------------	----------------

Packs of:	2 pc(s).
------------------	----------

Weight/pack:	1.3 kg
---------------------	--------

Copper weight (kg)	0
---------------------------	---

per piece):	
EAN:	4028177922433
Customs tariff number:	94039010
ETIM 7.0:	EC000721
ETIM 6.0:	EC000721
eCl@ss 8.0/8.1:	27182003
eCl@ss 6.0/6.1:	27189270
Product description:	VX Base/plinth trim panel, vented, for W/D: 600 mm, sheet steel
Approvals	
Approvals:	UL + C-UL