

Rittal – The System.

Faster – better – everywhere.

Network/server rack VX IT with glazed door, with 482.6 mm (19") mounting angles, standard – VX 5312.124

Date : Aug 18, 2021

ENCLOSURES

POWER DISTRIBUTION

CLIMATE CONTROL

IT INFRASTRUCTURE

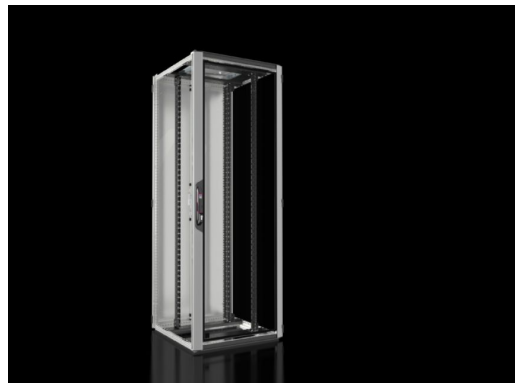
SOFTWARE & SERVICES

FRIEDHELM LOH GROUP



Network/server rack VX IT with glazed door, with 482.6 mm (19") mounting angles, standard – VX 5312.124

created: 18.08.2021 on www.rittal.com/com-en



Product description

Material:	Sheet steel Aluminium Glazed door: Single-pane safety glass, 3 mm
Surface finish:	Enclosure frame: Dipcoat-primed Interior installation: Spray-finished Rear door and roof: Dipcoat-primed, powder-coated Front door: Aluminium, anodised/spray-finished
Colour:	Enclosure frame, rear door and roof: RAL 7035 Front door: Vertical sections, silver coloured and horizontal sections, RAL 9005 Interior installation: RAL 9005 Handle and hinges: RAL 9005
Supply includes:	VX enclosure frame with doors and roof plate Glazed aluminium door at the front, 180° hinges Lock front and rear: Comfort handle for profile half-cylinders and security lock 3524 E Mounting angles, 482.6 mm (19") Spacers, height 50 mm, to raise a cover plate above the fan cut-out in the roof plate, for passive cooling (supplied loose). Not required for variants without a cut-out. 12 x 482.6 mm (19") fastener, 1 U, conductive (supplied loose) 25 multi-tooth screws, conductive (supplied loose) IPPC pallet Sheet steel rear door, solid, vertically divided, 180° hinges Roof plate, multi-piece, with side cable entry in the depth, double-sided, prepared for fan mounting plate
Note:	Depending on how and where it is sited, the door opening angle may vary for selected applications
Basic material:	Sheet steel

Product description

Dimensions:	Width: 800 mm Height: 2200 mm Depth: 800 mm
Installation height for components:	47 U
Distance between levels as delivered:	520 mm
482.6 mm (19") version:	front and rear
482.6 mm (19") attachment:	on the cross-member, screw-fastened at the top and bottom
Free mounting space to the 482.6 mm (19") level, front/rear:	150 mm / 130 mm
Load capacity:	8000 N Static (max.) per enclosure to UL 2416: 8000 N
Packs of:	1 pc(s).
Weight/pack:	115 kg
EAN:	4028177945272
Customs tariff number:	94032080
ETIM 7.0:	EC002499
ETIM 6.0:	EC002499
eCl@ss 8.0/8.1:	27180207
eCl@ss 6.0/6.1:	27180207
Product description:	VX IT, 19" mounting angles, standard, front and rear, glazed door, WHD: 800 x 2200 x 800 mm, 47 U

Approvals

Approvals:	UL + C-UL
Declarations:	Declaration of conformity