

Rittal – The System.

Faster – better – everywhere.

Section for cable entry, rear for VX, SE – VX 8618.812

Date : Aug 18, 2021

ENCLOSURES

POWER DISTRIBUTION

CLIMATE CONTROL

IT INFRASTRUCTURE

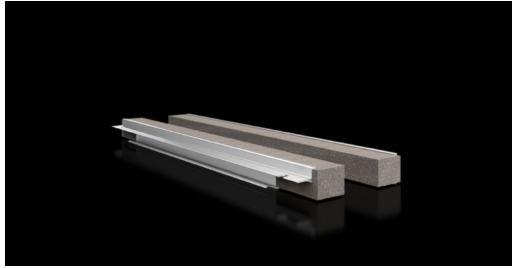
SOFTWARE & SERVICES

FRIEDHELM LOH GROUP



Section for cable entry, rear for VX, SE – VX 8618.812

created: 18.08.2021 on www.rittal.com/com-en



Product description

Description:	For top-mounting on the gland plate and enclosure frame.
Benefits:	Simple assembly Full-surface support High level of sealing of cables inserted into the enclosure
Applications:	For top-mounting on the gland plate and enclosure frame
Material:	Hard PVC Flame-resistant, self-extinguishing Temperature resistant to +60 °C Seal: PU foam Cross-section: 30 x 25 mm
Protection category IP to IEC 60 529:	IP 55 if installed correctly
Supply includes:	Plug-in sections, incl. foam rubber clamp strip
Product modification:	From February 2021, the cable entry section will have a plastic extrusion. The benefits are as follows: Simple clip-on assembly, improved handling and a superior grip on the gland plates.
Note:	You will need two pieces per cable entry point. From an enclosure width of 1000 mm, the base assembly is divided into two sections in the width. Two cable entry points (left/right) may be used.

Product description

To fit:	Enclosure type: VX Enclosure type: VX SE Width: = 1000 mm
----------------	---

Packs of:	4 pc(s).
Weight/pack:	0.36 kg
Copper weight (kg per piece):	0
EAN:	4028177922815
Customs tariff number:	76042990
ETIM 7.0:	EC002624
ETIM 6.0:	EC002624
eCl@ss 8.0/8.1:	27189265
eCl@ss 6.0/6.1:	27400604
Product description:	VX Section for cable entry, rear, for W: 1000 mm