

# Rittal – The System.

Faster – better – everywhere.

## **Base/plinth trim panels, vented for base/plinth system VX – VX 8620.091**

Date : Aug 18, 2021

ENCLOSURES

POWER DISTRIBUTION

CLIMATE CONTROL

IT INFRASTRUCTURE

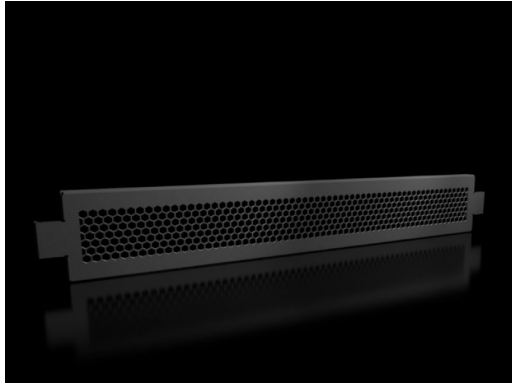
SOFTWARE & SERVICES

FRIEDHELM LOH GROUP



# Base/plinth trim panels, vented for base/plinth system VX – VX 8620.091

created: 18.08.2021 on [www.rittal.com/com-en](http://www.rittal.com/com-en)



## Product description

<b>Description:</b>	For venting the enclosure via the base/plinth. Specifically in applications such as power distribution where the enclosure gland plates are not used, this can be used to achieve a higher air throughput inside the enclosure. Various solutions to raise the roof and special roof plates with vent openings are also available for enclosure venting. With a 200 mm base/plinth height, one or two vented trim panels may optionally be used. Thanks to the complete symmetry of the base/plinth system VX, the trim panels may either be fitted at the front, rear or side on the base/plinth corner piece.
---------------------	---

<b>Material:</b>	Sheet steel
------------------	-------------

<b>Colour:</b>	RAL 9005
----------------	----------

<b>Supply includes:</b>	Assembly parts
-------------------------	----------------

<b>Note:</b>	Various solutions to raise the roof and special roof plates with vent openings are also available for enclosure venting
--------------	---

## Product description

<b>To fit:</b>	Width/depth: 800 mm
----------------	---------------------

<b>Dimensions:</b>	Height: 100 mm
--------------------	----------------

<b>Packs of:</b>	2 pc(s).
------------------	----------

<b>Weight/pack:</b>	1.95 kg
---------------------	---------

<b>Copper weight (kg)</b>	0
---------------------------	---

<b>per piece):</b>	
<b>EAN:</b>	4028177922440
<b>Customs tariff number:</b>	94039010
<b>ETIM 7.0:</b>	EC000721
<b>ETIM 6.0:</b>	EC000721
<b>eCl@ss 8.0/8.1:</b>	27182003
<b>eCl@ss 6.0/6.1:</b>	27189270
<b>Product description:</b>	VX Base/plinth trim panel, vented, for W/D: 800 mm, sheet steel
<b>Approvals</b>	
<b>Approvals:</b>	UL + C-UL