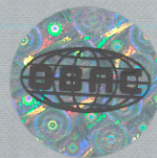




OBAC



Ośrodek Badań, Atestacji i Certyfikacji Sp. z o.o.
44-122 Gliwice, ul. Toruńska 27

(1) EU-TYPE EXAMINATION CERTIFICATE

(Translation)

- (2) Equipment, components and protective systems intended for use in potentially explosive atmospheres. Directive 2014/34/EU of the European Parliament and of the Council of 26 February 2014.
- (3) EU-Type - Examination Certificate No.: **OBAC 16 ATEX 0008X**
- (4) Product: **Luminares BARAT Ex and BARAT LED Ex**
- (5) Manufacturer: **Northcliffe Lighting UAB**
- (6) Address: **Raudondvario pl. 101, LT-47184 Kaunas, Lithuania**
- (7) This equipment, component or protective system and any of its approved version is specified in this certificate and in documents listed in p. 19.
- (8) The Institute for Research and Certification „OBAC” Ltd., notified body No.1461 in accordance with Article 13 of the European Council Directive 2014/34/EU of February 26, 2014, certifies that this equipment, component or protective system has been found to comply with the Essential Health and Safety Requirements relating to the design and construction of equipment, component or protective systems intended for use in potentially explosive atmospheres given in Annex II to the Directive. The examination and test results are recorded in the confidential report No. OBAC/16/ATEX/0008.
- (9) Compliance with the Safety Requirements has been assured by conformity with:
- | | | |
|------------------------------------------------|--------------------------------------------------|--------------------------------------------------|
| PN-EN 60079-0:2013
(EN 60079-0:2012) | PN-EN 60079-15:2010
(EN 60079-15:2010) | PN-EN 60079-31:2014
(EN 60079-31:2014) |
|------------------------------------------------|--------------------------------------------------|--------------------------------------------------|
- (10) If the sign „X” is placed after the certificate number, it indicates that the product concerned is subject to special conditions for safe use specified in the schedule to this certificate.
- (11) This EU-type examination certificate relates only to the design, evaluation and tests of the specified equipment, component or protective system according to the Directive 2014/34/EU. The certificate does not apply to further requirements of the Directive relating to the manufacture and placing on the market of this equipment, component or protective system.
- (12) The marking of the equipment, component or protective system must include the following:



II 3G Ex nA IIC T6 Gc or



II 3D Ex tc IIIC T85°C Dc



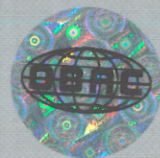
**Certification Body
Manager**

Piotr Tarnawski M. Com.

Gliwice, 29th June 2016



OBAC



Ośrodek Badań, Atestacji i Certyfikacji Sp. z o.o.
44-122 Gliwice, ul. Toruńska 27

(13)

SCHEDULE

(14)

to the EU-Type Examination Certificate
No. OBAC 16 ATEX 0008X

(15) Ex product description:

Luminaires BARAT Ex and BARAT LED Ex are designed to illuminate areas classified as zones 2 and 22 explosive gas and dust atmospheres. There are luminaires allowing to install one or two fluorescent tubes T8 and luminaires with LED stripes as a source of light. All electric equipment components and batteries are installed on a metal place - a base which also fulfills the role of a reflector. Luminaires may be also equipped with internal pass-through wiring allowing to connect luminaires to each other.

Depending on the type of luminaire BARAT Ex, there are:

Marking of luminaires	Power [W]
Barat 118 Z19 PC/PC HF IC Ex	1x18
Barat 218 Z20 PC/PC HF IC Ex	2x18
Barat 136 Z21 PC/PC HF IC Ex	1x36
Barat 236 Z22 PC/PC HF IC Ex	2x36
Barat 158 Z23 PC/PC HF IC Ex	1x58
Barat 258 Z24 PC/PC HF IC Ex	2x58

BARAT Ex emergency version:

Marking of luminaires	Power [W]
Barat 136 Z21 PC/PC HF IC EM3 Ex	1x36
Barat 236 Z22 PC/PC HF IC EM3 Ex	2x36
Barat 158 Z23 PC/PC HF IC EM3 Ex	1x58
Barat 258 Z24 PC/PC HF IC EM3 Ex	2x58

and BARAT LED Ex, there are:

Marking of luminaires	Power [W]
Barat LED1x1300 C101 T840 PC/PC OP IC Ex	12
Barat LED1x1900 C102 T840 PC/PC OP IC Ex	16
Barat LED2x1300 C104 T840 PC/PC OP IC Ex	24
Barat LED2x1900 C105 T840 PC/PC OP IC Ex	31
Barat LED1x2600 C107 T840 PC/PC OP IC Ex	24
Barat LED1x3800 C108 T840 PC/PC OP IC Ex	31





OBAC



Ośrodek Badań, Atestacji i Certyfikacji Sp. z o.o.
44-122 Gliwice, ul. Toruńska 27

(13)

SCHEDULE

(14)

to the EU-Type Examination Certificate
No. OBAC 16 ATEX 0008X

Barat LED2x2600 C110 T840 PC/PC OP IC Ex	46
Barat LED2x3800 C111 T840 PC/PC OP IC Ex	62
Barat LED1x3200 C113 T840 PC/PC OP IC Ex	29
Barat LED1x4700 C114 T840 PC/PC OP IC Ex	39
Barat LED2x3200 C116 T840 PC/PC OP IC Ex	58
Barat LED2x4700 C117 T840 PC/PC OP IC Ex	78

BARAT LED Ex emergency version

Marking of luminaires	Power [W]
Barat LED1x2600 C107 T840 PC/PC OP IC EM3 Ex	24
Barat LED1x3800 C108 T840 PC/PC OP IC EM3 Ex	31
Barat LED2x2600 C110 T840 PC/PC OP IC EM3 Ex	46
Barat LED2x3800 C111 T840 PC/PC OP IC EM3 Ex	62
Barat LED1x3200 C113 T840 PC/PC OP IC EM3 Ex	29
Barat LED1x4700 C114 T840 PC/PC OP IC EM3 Ex	39
Barat LED2x3200 C116 T840 PC/PC OP IC EM3 Ex	58
Barat LED2x4700 C117 T840 PC/PC OP IC EM3 Ex	78

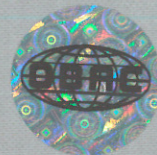
Rated data:

Supply voltage	220÷240 VAC
Luminaire ambient temperature without built-in batteries:	from -25°C to +40°C
Luminaire ambient temperature with built-in batteries:	from 0°C to +35°C
Protection class	IP 66
Battery	Accu-NiCd 4A 55





OBAC



Ósrodek Badań, Atestacji i Certyfikacji Sp. z o.o.
44-122 Gliwice, ul. Toruńska 27

(13)

SCHEDULE

(14)

to the EU-Type Examination Certificate
No. OBAC 16 ATEX 0008X

(16) Report:

- Number LL/014/2016/A of 01.06.2016.
- Number SB/2016/203-204-M.
- Number SB/2016/205-M.

Luminaires BARAT Ex and BARAT LED Ex meets the requirements for devices with explosion proof design and may be used as a device of group II, category 3G and group II, category 3D.

(17) Special conditions for safe use:

- Ambient temperature for a luminaire without built-in batteries:
- from -25°C to +40°C
- Ambient temperature for a luminaire with built-in batteries:
- from 0°C to +35°C
- Luminaires are intended for permanent systems.
- Additional warning marking shall be placed in a visible place on the device:
WARNING — DO NOT REPLACE BATTERIES IN A POTENTIALLY EXPLOSIVE ATMOSPHERE and about a possibility of an electrostatic discharge, reading:
WARNING — DANGER OF ELECTROSTATIC DISCHARGE — SEE THE INSTRUCTIONS.

(18) The compliance with Safety Requirements has been assured by compliance with standards shown in p.9 of this certificate.

(19) List of the agreed documentation:

- USER INSTRUCTION OF LUMINAIRE BARAT Ex - No. BART8EX-151214.
- USER INSTRUCTION OF LUMINAIRE BARAT LED Ex - No. BARLEDEX-151214.
- TECHNICAL DOCUMENTATION BARAT Ex - No. BARTECHD-151214.

