

SIGNUS LED1X5200 G666 T840 • 1108752

Product:	Signus LED1x5200 G666 T840
Order code:	1108752
Family:	Signus LED
Product group:	Parkų ir gatvių šviestuvai

GENERAL DATA

Description:	Pole-mounted LED park luminaire Light distribution type: direct Optical system: frosted polycarbonate diffuser, impact resistant Housing: aluminium Colour: dark grey (RAL7043)
Installation:	With three screws on poles Ø60mm. Cable, 3.0m, 3x0.75mm ²
Environment	Outdoor
Application	park, public space

ELECTRICAL DATA

Mains voltage:	220-240V, 50/60Hz	System power*, W:	39
Power factor:	>0,95	Control gear:	ECG on/off
Integrated sensor:	None	Surge protection (L to N), kV:	1
Surge protection (L/N to PE), kV:	2	Inrush current (I_{max}/time):	5A/ 50μs
Connection:	Cable, 3.0m, 3x0.75mm ²		

LIGHTING DATA

Light source and cap, W:	LED	Light source included:	yes
Luminaire output*, lm(ta+25°C):	5195	System efficacy, lm/W:	133
CRI (Ra):	80+	CCT, K:	4000
SDCM:	3	Light Distribution:	Other
Distribution Type:	Direct	Beam angle, °:	136
LED lifetime, h:	100000/L80B50	Ripple current (≤120 Hz), %:	≤3

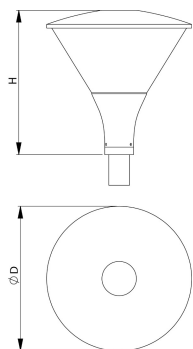
TECHNICAL DATA

Net weight, kg:	4.9	Quantity in package, pcs:	1
Packaging volume, m³/pcs:	0.0814	Pallet quantity, pcs:	10
Dimensions, mm:	420x420x420		

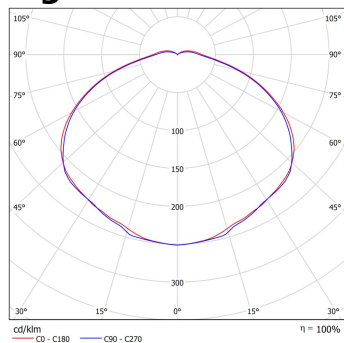
STANDARDS

Operating temperature range, °C:	ta -25...+40	Protection class IEC:	I
Ingress protection code:	IP65	Mechanical impact resistance:	IK08
EEC:	D	Certificates:	CE, RoHS
Warranty:	3 years		

Technical drawing (.jpg)



Light distribution curve (.jpg)



Note:

Tolerance range for optical and electrical data: $\pm 10\%$. Values apply to an ambient temperature of 25°C. NORTHCLIFFE LIGHTING is constantly developing and improving its products. The right is reserved to change any product specifications without prior notification

Date of issue: 2023-05-19 ■ NORTHCLIFFE LIGHTING, UAB ■ Raudondvario pl. 101, LT-47184 Kaunas, Lithuania ■ info@northcliffe.org ■ www.northcliffe.org