

**BEGA****84 874**

Surface-mounted luminaire RGBW



Project · Reference number

Date

## Product data sheet

### Application

Surface-mounted luminaire · Wall washer

The design of this in-ground floodlight makes it possible to fully illuminate a vertical surface, e.g. a façade, from the ground to the lower edge of the roof. The lower limit of the light distribution is a straight line, without the usual "light cone". The luminaire can be controlled by DALI colour light control (DT8, RGBWAF, xy).

We recommend the use of BEGA DALI system components.

For the various requirements at the installation site, we offer a connection housing as a accessory.

The luminaires can thus be installed on unpaved surfaces.

### Product description

Luminaire made of aluminium alloy,  
aluminium and stainless steel  
BEGA Tricoat® coating technology  
Matt safety glass  
Reflector made of pure anodised aluminium  
Luminaire with mounting plate for bolting onto a foundation or onto a connecting housing  
Mounting plate made of stainless steel  
Steel grade number 1.4301

4 elongated fixing holes

Width 9 mm · 170 x 170 mm spacing

3 elongated fixing holes

Width 9 mm · pitch circle Ø 132 mm

1,8 m water-resistant connecting cable

07RN8-F 5 G 1<sup>□</sup> with implemented water

stopper and 1.2 m PVC cable conduit

BEGA Ultimate Driver®

LED power supply unit

220-240 V ~ 0/50-60 Hz

DC 176-264 V

DALI controllable (DT8, RGBWAF, xy)

A basic isolation exists between power cable

and control line

BEGA Thermal Control®

Temporary thermal regulation to protect temperature-sensitive components without switching off the luminaire

Safety class I

Protection class IP 67

Dust-tight and protection against temporary immersion

Impact strength IK07

Protection against mechanical

impacts &lt; 2 joule

Maximum surface temperature 35 °C

(measured according to EN 60598 of  $t_a$  15 °C)

CE – Conformity mark

10 – Safety mark

Weight: 5.6 kg

This product contains light sources of energy efficiency classes F

### Lamp

Module connected wattage 23.2 W

Luminaire connected wattage 26.6 W

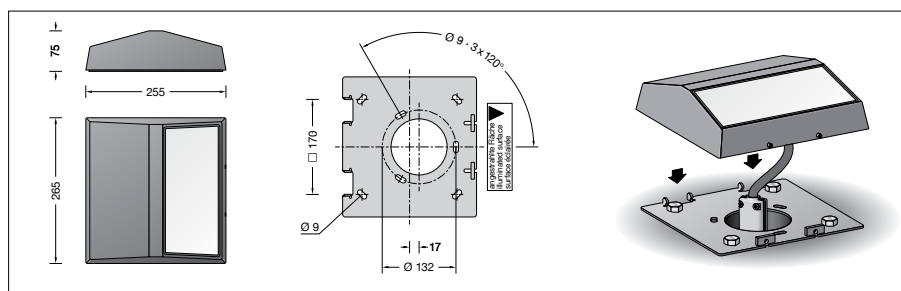
Rated temperature  $t_a = 25$  °CAmbient temperature  $t_{a \max} = 40$  °C

Module designation LED-0903/RGBW

Colour temperature of the white LED 4000 K

Luminaire luminous flux 1909 lm

Luminaire luminous efficiency 71,8 lm/W



### Service life · Ambient temperature

Rated temperature  $t_a = 25$  °C

LED psu: &gt; 50,000 h

LED module: &gt; 200,000 h (L80B50)

100,000 h (L90B50)

Ambient temperature max.  $t_a = 40$  °C (100 %)

LED psu: 50,000 h

LED module: &gt; 200,000 h (L80B50)

Ambient temperature max.  $t_a = 50$  °C (66 %)

LED psu: &gt; 50,000 h

LED module: &gt; 50,000 h (L70B50)

BEGA Thermal Control® protects temperature-sensitive luminaire components by temporarily limiting the nominal power at high temperatures.

### Lighting technology

Luminaire data for the DIALux lighting design program for outdoor lighting, street lighting and indoor lighting, as well as luminaire data in EULUMDAT and IES format are available on the BEGA website at [www.bega.com](http://www.bega.com).

### Accessories

**71 246** Connection housing  
made of galvanised steel  
Total length 225 mm

**70 730** Distribution box

The distribution box is meant for installation in the soil and allows a junction from the supply cable to the luminaire and through-wiring to the next luminaire.

After the electrical connection the distribution box is filled up with gel and closed.

For the accessories a separate instructions for use can be provided upon request.

### BEGA Tricoat®

BEGA Tricoat® is a protected trademark for a technology that we use in order to achieve optimal corrosion resistance. These carefully coordinated inorganic and organic coating processes applied to extremely resistant alloys ensure the best possible surface protection and outstanding corrosion resistance.