

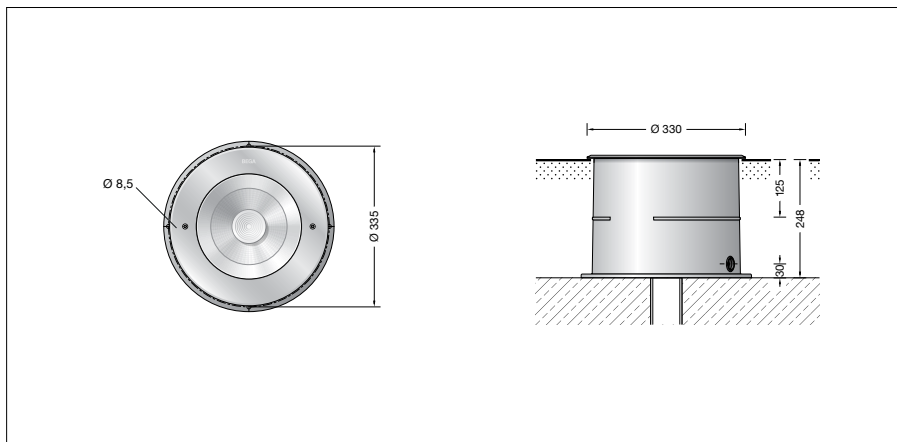
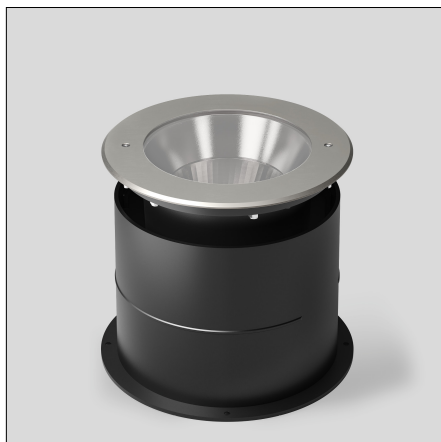
BEGA**84 296**

In-ground luminaire



Project · Reference number

Date



Product data sheet

Product description

Luminaires and installation housings made of highly corrosion-resistant aluminium
 BEGA Tricoat® coating technology
 Cover ring made of stainless steel
 Steel grade no. 1.4301

Ring made of glass fibre reinforced synthetic material

Clear safety glass

Reflector surface made of pure aluminium

Optical silicone lens · BEGA Hybrid Optics®

Recess housing with cable entry for cable conduit, max \varnothing 20 mm

1,8 m water-resistant connecting cable

07RN8-F 5 G 1[□] with implemented water stopper and 1.2 m PVC cable conduit

BEGA Ultimate Driver®

LED power supply unit

220-240 V ~ 0/50-60 Hz

DC 176-264 V

DALI controllable

A basic isolation exists between power cable and control line

BEGA Thermal Control®

Temporary thermal regulation to protect temperature-sensitive components without switching off the luminaire

Safety class I

Protection class IP 68 10 m

Dust-tight and water pressure tight

Maximum submersion depth 10 m

Pressure load 5,000 kg (~50 kN)

Impact strength IK10

Protection against mechanical

impacts < 20 joule

CE – Conformity mark

10 16 – Safety mark

Weight: 13.7 kg

Inrush current

Inrush current: 5 A / 100 μ s

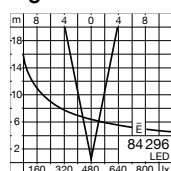
Maximum number of luminaires of this type per miniature circuit breaker:

B 10A: 18 luminaires

B 16A: 28 luminaires

C 10A: 18 luminaires

C 16A: 28 luminaires

Light distribution**Application**

Floodlight with symmetrical light distribution.

For recessed mounting in compacted surfaces, paths and places.

Drive-over luminaire for vehicles with pneumatic tyres.

Please note:

Luminaire must not be used for installation in road lanes, where the fixture is exposed to a horizontal strain due to braking, acceleration and change of direction.

For walk-through public areas, we recommend skid-blocking glass

– see accessories.

Lamp

Module connected wattage 46.7 W

Luminaire connected wattage 50.8 W

Rated temperature $t_a = 25^\circ\text{C}$

Ambient temperature $t_{a\text{ max}} = 40^\circ\text{C}$

84 296 K3

Module designation LED-0785/830

Colour temperature 3000 K

Colour rendering index CRI > 80

Module luminous flux 7600 lm

Luminaire luminous flux 5299 lm

Luminaire luminous efficiency 104,3 lm/W

84 296 K4

Module designation LED-0785/840

Colour temperature 4000 K

Colour rendering index CRI > 80

Module luminous flux 7795 lm

Luminaire luminous flux 5435 lm

Luminaire luminous efficiency 107 lm/W

Lighting technology

Half beam angle 20°

Luminaire data for the light planning program DIALux for outdoor lighting, street lighting and interior lighting as well as luminaire data in EULUMDAT and IES format are available on our website www.bega.com.

BEGA Hybrid Optics®

BEGA Hybrid Optics® offers complete lighting control thanks to optimum refraction and reflection. Precisely calculated reflectors with a surface made of pure aluminium and lenses made of ultra-clear silicone or glass capture nearly every beam of light from the LED modules. The interplay between lens and reflector technologies achieves maximum application efficiency.

BEGA Tricoat®

BEGA Tricoat® is a protected trademark for a technology that we use in order to achieve optimal corrosion resistance. These carefully coordinated inorganic and organic coating processes applied to extremely resistant alloys ensure the best possible surface protection and outstanding corrosion resistance.

Service life · Ambient temperature

Rated temperature $t_a = 25^\circ\text{C}$

LED psu: > 50,000 h

LED module: 95,000 h (L 80 B 50)

100,000 h (L 70 B 50)

Ambient temperature max. $t_a = 40^\circ\text{C}$ (100 %)

LED psu: 50,000 h

LED module: 55,000 h (L 80 B 50)

100,000 h (L 70 B 50)

Ambient temperature max. $t_a = 50^\circ\text{C}$ (92 %)

LED psu: 50,000 h

LED module: > 50,000 h (L 70 B 50)

BEGA Thermal Control® protects temperature-sensitive luminaire components by temporarily limiting the nominal power at high temperatures.

Article No. 84 296

LED colour temperature optionally 3000 K or 4000 K

3000 K – Article number + **K3**

4000 K – Article number + **K4**

We supply this luminaire with skid-blocking glass which is denoted by **R** after the article number.

Accessories

14001415R Skid-blocking glass in accordance with EN ISO 51130 R13

Surface abrasion in accordance with

EN ISO 10545-7: Category II

Anti-slip protection in accordance with DIN 51097 Class C

Distribution box for installation in soil

70 730 Distribution box with 7 cable entries

Connection terminals $5 \times 4^\circ$

71 053 Distribution box with 10 cable entries

Connection terminals $6 \times 16^\circ$

A separate instructions for use can be provided upon request.