

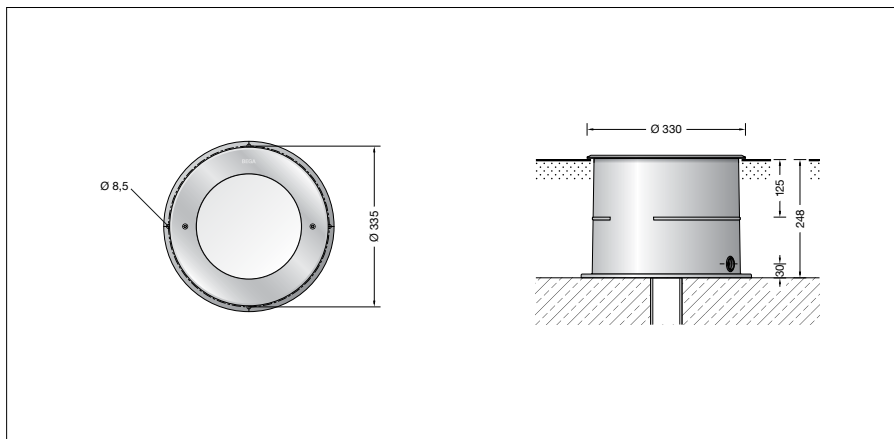
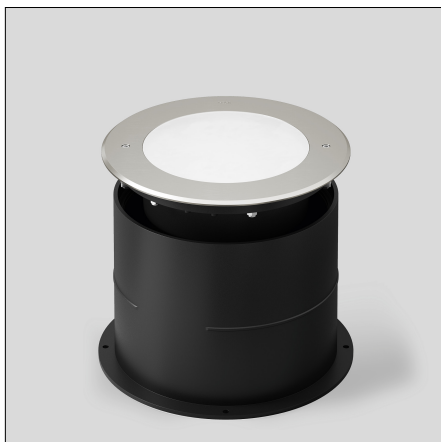
BEGA**84 290**

In-ground luminaire



Project · Reference number

Date



Product data sheet

Application

Recessed location luminaire for recessed mounting in compacted surfaces, paths and open areas. Drive-over luminaire for vehicles with pneumatic tyres.

Please note:

Luminaire must not be used for installation in road lanes, where the fixture is exposed to a horizontal strain due to braking, acceleration and change of direction.

For walk-through public areas, we recommend skid-blocking glass – see accessories.

Product description

Luminaires and installation housings made of highly corrosion-resistant aluminium
BEGA Tricoat® coating technology
Ring made of glass fibre reinforced synthetic material

Cover ring made of stainless steel

Steel grade no. 1.4301

Safety glass, white

Recess housing with cable entry for cable conduit, max Ø 20 mm

1,8 m water-resistant connecting cable

05RN8-F 3 G 1[□] with implemented water stopper and 1.2 m PVC cable conduit

BEGA Ultimate Driver®

LED power supply unit

220-240 V ~ 0/50-60 Hz

DC 176-264 V

Safety class I

Protection class IP 68 10 m

Dust-tight and water pressure tight

Maximum submersion depth 10 m

Pressure load 5,000 kg (~50 kN)

Impact strength IK10

Protection against mechanical

impacts < 20 joule

– Safety mark

– Conformity mark

Weight: 11.2 kg

Lamp

Module connected wattage	6.6 W
Luminaire connected wattage	7.7 W
Rated temperature	$t_a = 25\text{ °C}$
Ambient temperature	$t_{a\text{ max}} = 45\text{ °C}$
When installed in heat-insulating material	$t_{a\text{ max}} = 45\text{ °C}$

On request we can offer you modifications for environments with higher temperatures as a customized product.

84 290 K3

Module designation	LED-1017/830
Colour temperature	3000 K
Colour rendering index	CRI > 80
Module luminous flux	1340 lm
Luminaire luminous flux	552 lm
Luminaire luminous efficiency	71,7 lm/W

84 290 K4

Module designation	LED-1017/840
Colour temperature	4000 K
Colour rendering index	CRI > 80
Module luminous flux	1380 lm
Luminaire luminous flux	569 lm
Luminaire luminous efficiency	73,9 lm/W

Service life · Ambient temperature

Rated temperature $t_a = 25\text{ °C}$	
LED psu:	> 50,000 h
LED module:	> 200,000 h (L 80 B 50)
	100,000 h (L 90 B 50)

Ambient temperature max. $t_a = 45\text{ °C}$ (100 %)

LED psu:	50,000 h
LED module:	> 200,000 h (L 80 B 50)
	100,000 h (L 90 B 50)

Light technique

Luminaire data for the light planning program DIALux for outdoor lighting, street lighting and indoor lighting as well as luminaire data in EULUMDAT- and IES-format you will find on the BEGA web page www.bega.com.

Inrush current

Inrush current: 11.3 A / 112 µs

Maximum number of luminaires of this type per miniature circuit breaker:

B 10A: 34 luminaires

B 16A: 55 luminaires

C 10A: 57 luminaires

C 16A: 92 luminaires

BEGA Tricoat®

BEGA Tricoat® is a protected trademark for a technology that we use in order to achieve optimal corrosion resistance. These carefully coordinated inorganic and organic coating processes applied to extremely resistant alloys ensure the best possible surface protection and outstanding corrosion resistance.

Article No. 84 290

LED colour temperature optionally 3000 K or 4000 K

3000 K – Article number + **K3**

4000 K – Article number + **K4**

We supply this luminaire with skid-blocking glass which is denoted by **R** after the article number.

Accessories

14001414R Skid-blocking glass in accordance with EN ISO 51130 R13
Surface abrasion in accordance with EN ISO 10545-7: Category II
Anti-slip protection in accordance with DIN 51097 Class C

Distribution box for installation in soil

70 730 Distribution box with 7 cable entries
Connection terminals 5 x 4[□]

71 053 Distribution box with 10 cable entries
Connection terminals 6 x 16[□]

A separate instructions for use can be provided upon request.