

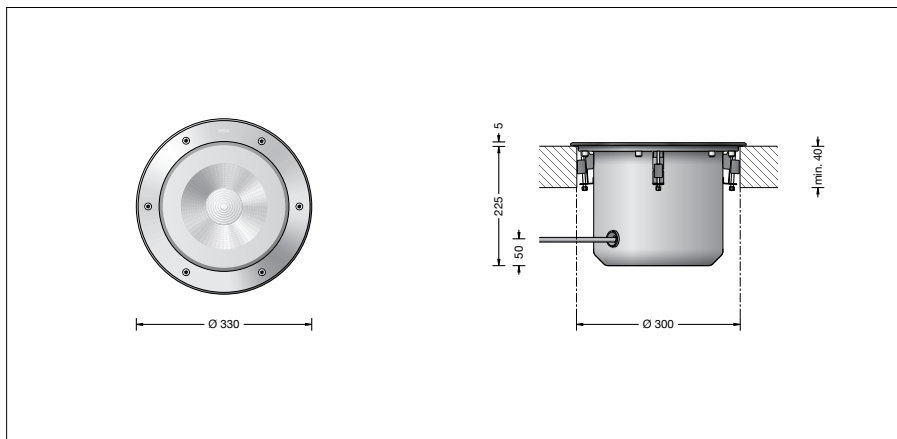
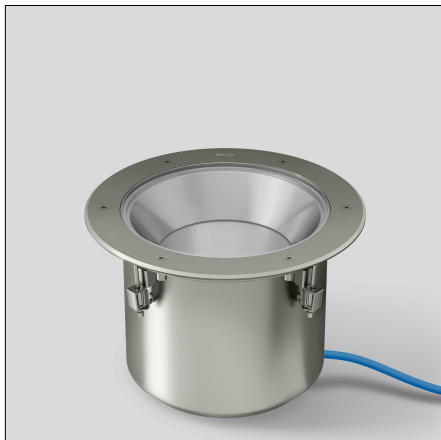
**BEGA****84 561**

In-ground luminaire



Project · Reference number

Date



## Product data sheet

### Application

In-ground luminaire with symmetrical narrow beam light distribution.  
For installation in cut-outs in topsoil.  
The luminaires can be driven over by vehicles with pneumatic tyres.

#### Please note:

Luminaire must not be used for installation in road lanes, where the fixture is exposed to a horizontal strain due to braking, acceleration and change of direction.  
For walk-through public areas, we recommend skid-blocking glass – see accessories.

### BEGA Hybrid Optics®

BEGA Hybrid Optics® offers complete lighting control thanks to optimized refraction and reflection. Precisely calculated reflectors with a pure aluminium surface and lenses, for example made of ultra-clear silicone or glass, capture almost every single light beam emitted by the LED modules. Maximum light efficiency is achieved via the synergy between lens and reflector technology.

### Lighting technology

Half beam angle 21°  
Luminaire data for the DIALux lighting design program for outdoor lighting, street lighting and indoor lighting, as well as luminaire data in EULUMDAT and IES format are available on our website at [www.bega.com](http://www.bega.com).

### Inrush current

Inrush current: 5 A / 100 µs  
Maximum number of luminaires of this type per miniature circuit breaker:  
B10A: 28 luminaires  
B16A: 45 luminaires  
C10A: 28 luminaires  
C16A: 48 luminaires

### Product description

Luminaire made of stainless steel  
Steel grade no. 1.4301  
Clear safety glass  
Reflector surface made of pure aluminium  
Optical silicone lens · BEGA Hybrid Optics®  
Required recessed opening Ø 300 mm  
Minimum material thickness 40 mm  
Fixing is achieved by using four wedge-shaped clamping elements  
1,8 m water-resistant connecting cable 07RN8-F 5G1<sup>□</sup> with implemented water stopper and 1.2 m PVC cable conduit  
BEGA Ultimate Driver®  
LED power supply unit  
220-240 V ~ 0/50-60 Hz  
DC 176-264 V  
DALI controllable  
A basic isolation exists between power cable and control line  
BEGA Thermal Control®  
Temporary thermal regulation to protect temperature-sensitive components without switching off the luminaire  
Safety class I  
Protection class IP 68 10 m  
Dust-tight and water pressure tight  
Maximum submersion depth 10 m  
Not suitable for permanent operation under water  
Pressure load 2,000 kg (~20 kN)  
Impact strength IK10  
Protection against mechanical impacts < 20 joule  
Maximum surface temperature 30 °C (measured according to EN 60598 of ta 15 °C)  
CE – Conformity mark  
10 – Safety mark  
Weight: 7.7 kg  
This product contains light sources of energy efficiency class(es) D

### Lamp

Module connected wattage	35.7 W
Luminaire connected wattage	38.4 W
Rated temperature	t <sub>a</sub> = 25 °C
Ambient temperature	t <sub>a max</sub> = 40 °C

### 84 561 K27

Module designation	LED-0785/827
Colour temperature	2700 K
Colour rendering index	CRI > 80
Module luminous flux	5760 lm
Luminaire luminous flux	3886 lm
Luminaire luminous efficiency	101,2 lm/W

### 84 561 K3

Module designation	LED-0785/830
Colour temperature	3000 K
Colour rendering index	CRI > 80
Module luminous flux	6010 lm
Luminaire luminous flux	4055 lm
Luminaire luminous efficiency	105,6 lm/W

### 84 561 K4

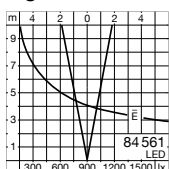
Module designation	LED-0785/840
Colour temperature	4000 K
Colour rendering index	CRI > 80
Module luminous flux	6165 lm
Luminaire luminous flux	4160 lm
Luminaire luminous efficiency	108,3 lm/W

### Service life · Ambient temperature

Rated temperature t <sub>a</sub> = 25 °C	
LED psu:	> 50,000 h
LED module:	110,000 h (L 80 B 50)
Ambient temperature max. t <sub>a</sub> = 40 °C (100 %)	
LED psu:	50,000 h
LED module:	80,000 h (L 80 B 50)
	100,000 h (L 70 B 50)
Ambient temperature max. t <sub>a</sub> = 50 °C (90 %)	
LED psu:	> 50,000 h
LED module:	> 50,000 h (L 70 B 50)

BEGA Thermal Control® protects temperature-sensitive luminaire components by temporarily limiting the nominal power at high temperatures.

### Light distribution



### Accessories

**14000233R** Skid-blocking glass  
BEGA skid-blocking glass with the highest rating R 13 according to DIN 51130 can be used without restriction for all public areas. Abrasion resistance according to EN ISO 10545-7 Class 3

**70730** Distribution box for installation in soil with 7 cable entries  
Connection terminals 5 x 4<sup>□</sup>

For the accessories a separate instructions for use can be provided upon request.

### Article No. 84 561

LED colour temperature optionally 2700 K, 3000 K or 4000 K

2700 K – Article number + **K27**

3000 K – Article number + **K3**

4000 K – Article number + **K4**

We supply this luminaire with skid-blocking glass which is denoted by **R** after the article number.