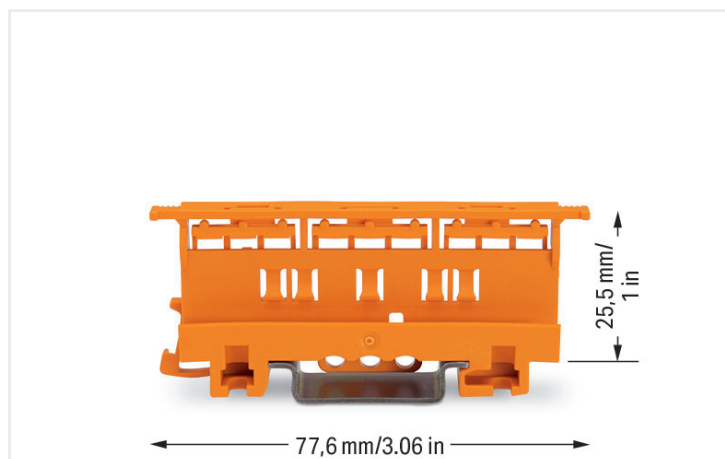


Data sheet | Item number: 221-500

Mounting carrier; 221 Series - 4 mm²; for DIN-35 rail mounting/screw mounting;
orange

<https://www.wago.com/221-500>



Color: ■ orange



Physical data

Width	17.5 mm / 0.689 inch
Height	77.6 mm / 3.055 inch
Depth from upper-edge of DIN-rail	25.5 mm / 1.004 inch

Mechanical data

Mounting type	DIN-35 rail Screw mount
Suitable	for 2-, 3- and 5-conductor 221 Series Splicing Connectors (4 mm ²)

Material data

Note (material data)	Information on material data can be found here
Color	orange
Insulation material	Polyamide (PA66)
Flammability class per UL94	V0
Fire load	0 MJ
Weight	9.6 g

Commercial data

eCl@ss 10.0	27-14-11-92
eCl@ss 9.0	27-14-11-92
ETIM 7.0	EC002848
ETIM 6.0	EC002848
PU (SPU)	50 (10) Stück
Packaging type	Box
Country of origin VKOrg Germany	CN
GTIN	4055143421942
Customs tariff number VKOrg Germany	39269097900

Downloads	
Environmental Product Compliance	
Compliance Search	
Environmental Product Compliance 221-500	

Documentation			
Additional Information		Bid Text	
Technical Section	pdf 2142.18 KB	221-500 19.02.2019	xml 2.72 KB
		221-500 23.01.2019	docx 14.58 KB
		ausschreiben.de 221-500	

CAD/CAE-Data	
CAD data	CAE data
2D/3D Models 221-500 	EPLAN Data Portal 221-500
	ZUKEN Portal 221-500

1 Compatible products
1.1 Optional accessories
1.1.1 Marking
1.1.1.1 Marking strip



Item no.: 210-833
Marking strips; 25 m on roll; 6 mm wide; plain; Self-adhesive; white

1.1.2 Mounting adapter
1.1.2.1 Mounting accessories



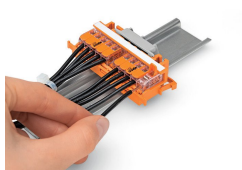
Item no.: 222-510
Angled DIN-rail adapter; in combination with mounting carrier; 221-500 or 222-500; for DIN-35 rail mounting; gray



Item no.: 222-505
Strain relief plate; for mounting carrier; 221 or 222 Series, can be snapped

Installation notes

Conductor termination



CAGE CLAMP® connection:
Conductor termination with connectors
fitted in a mounting carrier



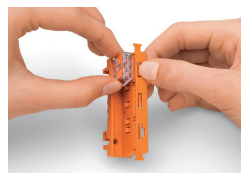
Removing a conductor.



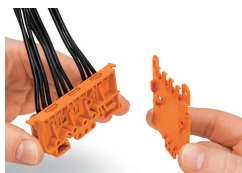
Inserting a connector into the mounting
carrier.



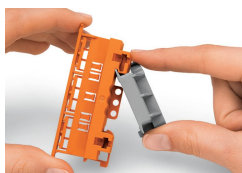
Inserting a connector into the mounting
carrier.



Removing a connector from the mounting
carrier.



Securing a strain relief plate (222-505) to
the mounting carrier.



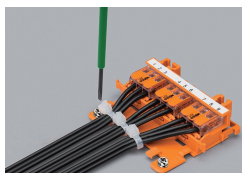
Snapping the angled DIN-rail adapter
(222-510) onto the mounting carrier.



Horizontal mounting on DIN-35 rail using
an angled DIN-rail adapter



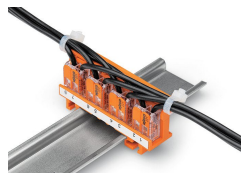
Horizontal mounting on DIN-35 rail using
an angled DIN-rail adapter



Horizontal screw mounting with strain relief
plate on a flat surface



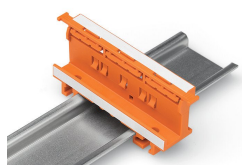
Vertical mounting with strain relief plate
on DIN-35 rail



Strain relief via cable ties on the moun-
ting carrier (transverse to the connectors'
wiring direction) – clamping units labeled
via marking strips (210-334)



Vertical screw mounting with strain relief
plate on a flat surface



Mounting carrier on a DIN-35 rail

Testing



Testing connectors via test slots on top of
the carrier.

Subject to changes. Please also observe the further product documentation!

Current addresses can be found at: www.wago.com