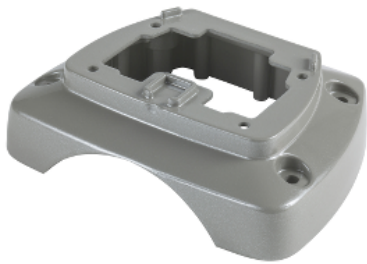


Product data sheet

Specifications

OptiLine 45 - floor fixing - grey

ISM20820



Main

Cabling installation system	Post Pole
Product or component type	Floor fixing

Complementary

Type of pole	One-sided
Type of post	One-sided
Colour tint	Grey (RAL 9007)
Quantity per set	Set of 1
Pole/Post surface finish	Anodized Powder coated
Pole fixing mode	Tension-mounted
Fixing mode	By screws
Material	Aluminium powder coated
Length	102 mm
Height	38 mm
Width	125 mm
Market segment	Residential Small commercial

Environment

Standards	EN 50085-1:2005 NF C 68-102
Ambient air temperature for operation	-25...60 °C
IP degree of protection	IP30

Packing Units

Unit Type of Package 1	PCE
Number of Units in Package 1	1
Package 1 Weight	210 g
Package 1 Height	3.8 cm

Disclaimer: This documentation is not intended as a substitute for and is not to be used for determining suitability or reliability of these products for specific user applications

Package 1 width	10.4 cm
Package 1 Length	12.6 cm
Unit Type of Package 2	S03
Number of Units in Package 2	50
Package 2 Weight	10.987 kg
Package 2 Height	30 cm
Package 2 width	30 cm
Package 2 Length	40 cm

Offer Sustainability

EU RoHS Directive	Pro-active compliance (Product out of EU RoHS legal scope) EU RoHS Declaration
Toxic heavy metal free	Yes
Mercury free	Yes
RoHS exemption information	Yes
China RoHS Regulation	China RoHS declaration Pro-active China RoHS declaration (out of China RoHS legal scope)
Environmental Disclosure	Product Environmental Profile

Contractual warranty

Warranty	18 months
----------	-----------