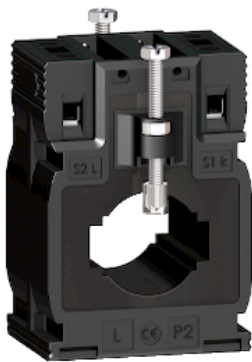


Product data sheet

Specifications



current transformer tropicalised DIN
mount 150 5 cables d. 27 - bars
10x32 15x25

METSECT5MA015

Main

Range	PowerLogic
Product name	CT
Product or component type	Current transformer
Secondary current	5 A
Accuracy class	Class 0.5 at 3 VA Class 1 at 5 VA
[In] rated current	150 A

Complementary

Current transformer type	Tropicalised for busbar and cable
Current transformer ratio	150/5
[Ith] conventional free air thermal current	9 kA
Dynamic withstand current	2.5 Ith
Maximum safety factor	5
[Ue] rated operational voltage	< 720 V AC 50/60 Hz
[Ui] rated insulation voltage	3 kV
Mounting mode	Insulated locking screw
Mounting support	DIN rail Mounting plate Busbar
Width	56 mm outside:
Height	80 mm outside:
Depth	43 mm frame: 63 mm total:
Diameter	27 mm
Net weight	0.298 kg
[Uimp] rated impulse withstand voltage	3 kV
Electrical insulation class	Class B
Cable outer diameter	27 mm
Opening of bars	32.5 x 10.5 25.5 x 15.5

Sealing	Without
---------	---------

Environment

Standards	VDE 0414 IEC 61869-2
Product certifications	EAC CE
IP degree of protection	IP20
Relative humidity	0...95 %
Ambient air temperature for operation	-25...60 °C

Packing Units

Unit Type of Package 1	PCE
Number of Units in Package 1	1
Package 1 Weight	308 g
Package 1 Height	7 cm
Package 1 width	7.2 cm
Package 1 Length	9 cm
Unit Type of Package 2	S03
Number of Units in Package 2	55
Package 2 Weight	17.427 kg
Package 2 Height	30 cm
Package 2 width	30 cm
Package 2 Length	40 cm

Offer Sustainability

EU RoHS Directive	Compliant EU RoHS Declaration
China RoHS Regulation	China RoHS declaration Product out of China RoHS scope. Substance declaration for your information
Environmental Disclosure	Product Environmental Profile
Circularity Profile	End of Life Information
WEEE	The product must be disposed on European Union markets following specific waste collection and never end up in rubbish bins